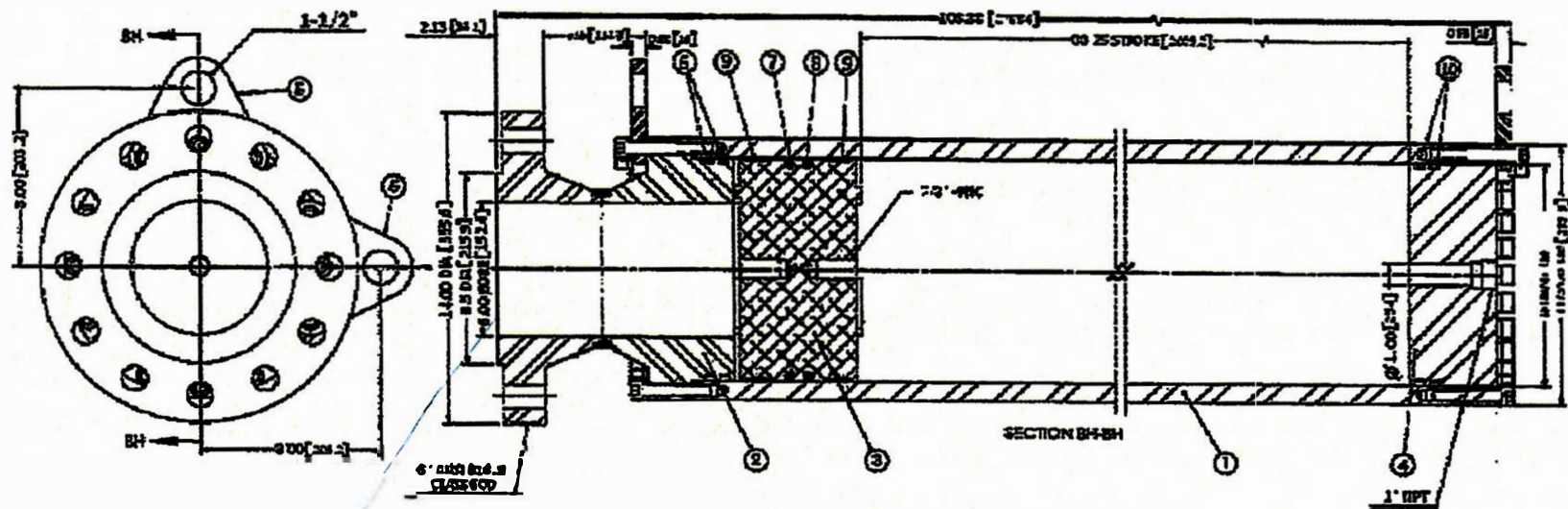


Опросный лист на изделие EXP-9093



СНА (стержневая конструкция)

Поз.	Наименование	
1	Гильза	
2	Крышка нижняя	
3	Поршень	
4	Крышка верхняя	
5	Прошина присоединительная	
6	Кольца круглого сечения крышки нижней	2 шт
7	Уплотнение поршня со стороны жидкости	1 шт
8	Уплотнение поршня со стороны газа	1 шт
9	Кольца отальжания	2 шт
10	Кольцо круглого сечения со стороны газа	2 шт

СНП 6" ANSI 16.5 CLASS 600

Рисунок 5 - Гидропневмоаккумулятор CRC-2369

Изм.	Взам.	Н. дораб.	Изд.	Диаг.

0426A.00.00.000 РЗ

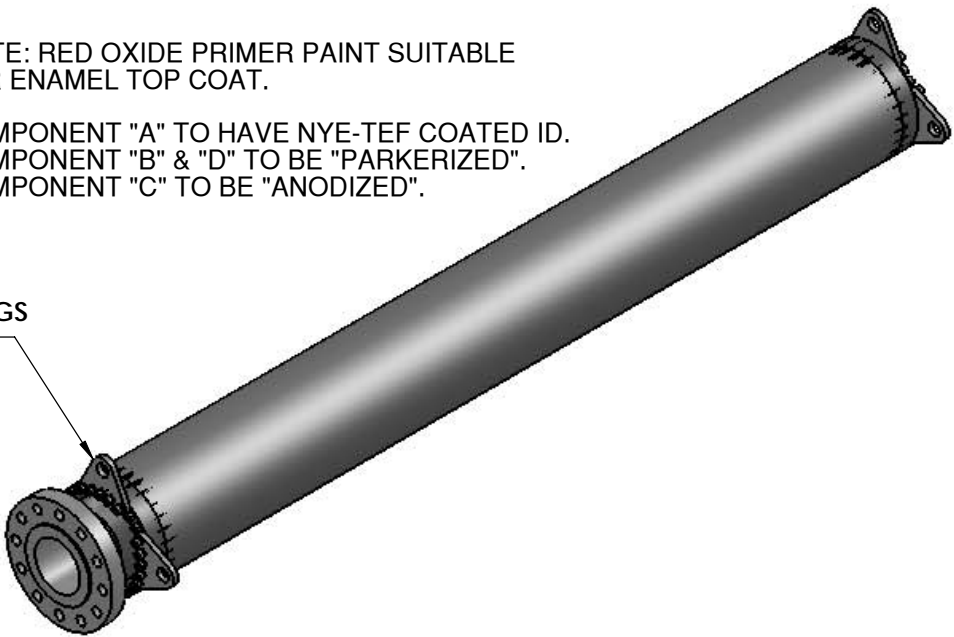
Лист
42

Копировать Формат А3

CUSTOMER	WOMACK MACHINE SUPPLY CO. (HO)
ADDRESS	7807 BLUFF POINT DR., SUITE 140
	HOUSTON, TX 77086-1786
PHONE	713-956-6400
CONTACT	JIMMY VITULLI
SIZE	10" X 88.25"
MAX. OPERATING PRESSURE	1,500 PSI (TEST @ 2,250 PSI)
RETRACTED	108.88"
EXTENDED	XXXXX
WEIGHT	1,140 LBS. DRY

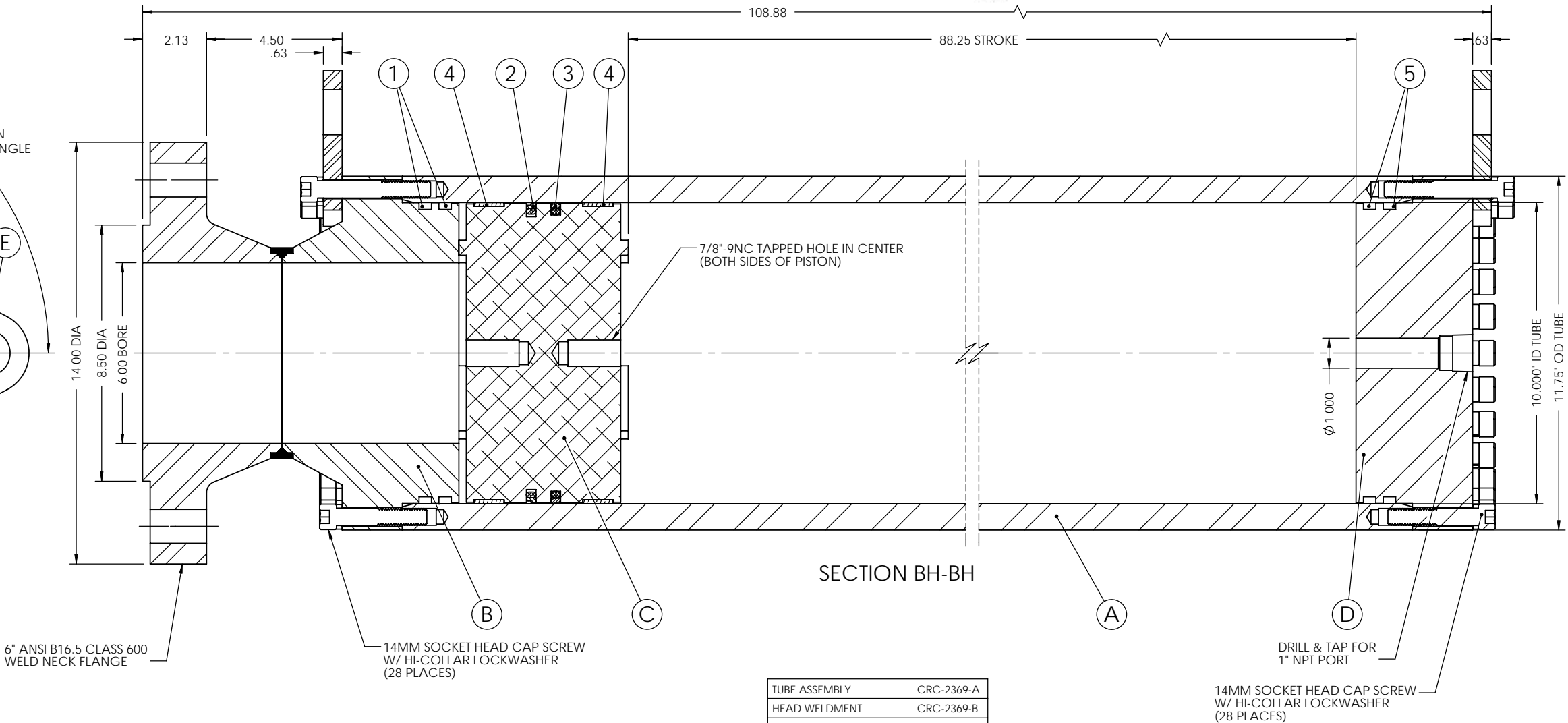
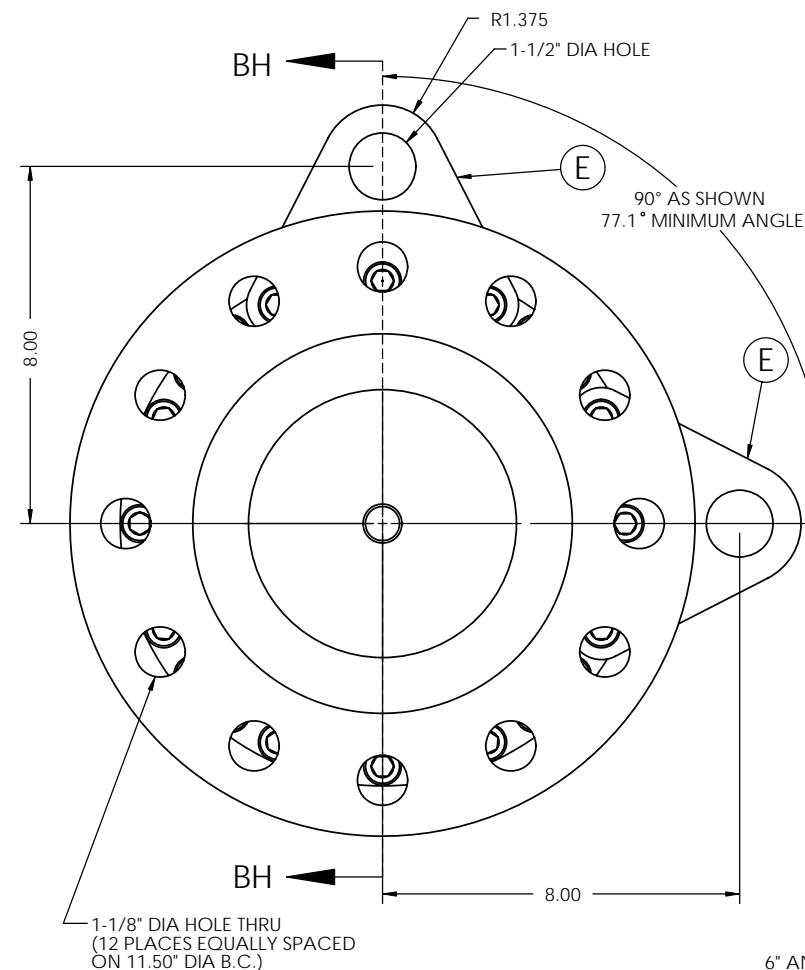
* NOTE: RED OXIDE PRIMER PAINT SUITABLE FOR ENAMEL TOP COAT.

- * COMPONENT "A" TO HAVE NYE-TEF COATED ID.
- * COMPONENT "B" & "D" TO BE "PARKERIZED".
- * COMPONENT "C" TO BE "ANODIZED".



**NOTE: ORIENTATION OF LIFTING LUGS
TO BE DETERMINED BY CUSTOMER.**

CUSTOMER APPROVAL STAMP	
NAME: _____	<input type="checkbox"/> APPROVED <input type="checkbox"/> APPROVED <input type="checkbox"/> AS NOTED <input type="checkbox"/> NOT APPROVED
SIGNATURE: _____	DATE: ____/____/____



PORT LOCATIONS (VIEWED FROM REAR):

EXTEND- ?? " SAE CODE-62 4-BOLT FLANGE PORT @ #2 & 4
DRILL ?? " DIA HOLE THRU ?..?? " BACK

RETRACT- 1/2" SAE CODE-62 4-BOLT FLANGE PORT @ #2 & 4
DRILL 1/2" DIA HOLE THRU 1.000" BACK

TUBE ASSEMBLY	CRC-2369-A
HEAD WELDMENT	CRC-2369-B
PISTON	CRC-2369-C
BUTT PLATE	CRC-2369-D
LIFTING LUG (4)	CRC-2369-E

UNLESS OTHERWISE NOTED										SCALE		NONE									
TOLERANCES FABRICATION = ± 0.025 XX = ± 0.125 XXX = ± 0.060 ANGLES = ± 3° MACHINE = ± 0.030 XX = ± 0.015 XXX = ± 0.005 LENGTH = 1/2" RETRACTED & STROKE ANGLE ± 1/16"										1. DO NOT SCALE DRAWING 2. DIMS ARE IN INCHES 3. REMOVE ALL BURRS AND SHARP CORNERS 4. INSIDE CORNERS 0.032" R 4. INSIDE CORNERS 0.020" R DR CHAM. 0.020" x 45° 5. MACHINE FINISH										DESIGNED BY D. COMBS DRAWN BY J. BUCK REVIEWED BY D. COMBS	
A 125 NO.										SEE REV SHEET		REVISED BY D.H.		REVIEWED BY D.C.		APPROVED BY 07-29-10		DATE DRAWING NUMBER CRC-2369			

THE INFORMATION DISCLOSED ON THIS DRAWING IS PROPRIETARY AND SHALL NOT BE DISCLOSED, USED, OR DUPLICATED FOR PROCUREMENT OR MANUFACTURING PURPOSES WITHOUT THE EXPRESS WRITTEN CONSENT OF HYDRATECH/CRC.

HYDRAtch/CRC
22955 McAuliffe Drive
Robertsdale, AL 36567



CRC MANUFACTURING, INC.
ROBERTSDALE, AL - (251) 947-5200

PART # CRC 2369

SN # 1002

JOB# 1236

DATE: 3-1

MAX. OPERATING PRESSURE: 5

